

Medicine Prospectus 2024



RCSI University of Medicine
and Health Sciences - Dublin



University College Dublin



Trinity College Dublin



University College Cork



University of Limerick



University of Galway



RCSI
RCSI Bahrain



Since its inception over 30 years ago, thousands of students have undertaken studies in Ireland via the Atlantic Bridge Program.



Table of Contents

About Us	2-3
RCSI University of Medicine and Health Sciences	4-5
University College Dublin	6-7
Trinity College Dublin	8-9
University College Cork	10-11
University of Limerick	12-13
University of Galway	14-15
RCSI Bahrain	16-17
Entry Requirements	18
Pathway Home	19
Residency Match Data	20-21
How to Apply	22-23
Connect with Us	24
Travel Distances	25

About Atlantic Bridge



Atlantic Bridge is the exclusive representative in North America for all the Irish Medical, Dental, Physiotherapy, Pharmacy, and Law programs. Funded by the Irish universities, for over 30 years Atlantic Bridge has helped thousands of students secure places in Ireland's world class universities.

Applying to an overseas program can be complicated with different admissions systems. That's where Atlantic Bridge can help. Our system simplifies the admissions process, and our Admissions Counselors will help you navigate that process. With just one straightforward application and one set of documents students can apply to all the schools.

Medical Schools



RCSI University of Medicine and Health Sciences

Founded in 1784 RCSI is the world's most International Medical School and today students from 60 nations attend RCSI with almost 25% from North America.



University College Dublin

Ireland's largest university with a student population of over 25,000. The Medical School founded in 1855 delivers medical education in world class facilities and is based on the campus, spread over an expansive 326 acres that balance architecture with protected green spaces.



Trinity College Dublin

The School of Medicine was founded in 1711 and has been teaching medicine for over 300 years. The historic campus is located in the heart of Dublin's city center.



University College Cork

Since 1849, the University has taught the art and science of medicine to students from all over the world. The magnificent garden campus is located on the southern coast of Ireland.



University of Limerick

UL is Ireland's newest medical school. A Graduate Entry Program was launched in 2007 utilizing the progressive Problem Based Learning (PBL) approach to medical education.



University of Galway

University of Galway, located on Ireland's west coast, has trained future physicians since its founding in 1845 and provides healthcare to the North-west of Ireland.



RCSI Bahrain

RCSI Bahrain delivers the world-renowned healthcare teaching that RCSI has become famous for. At RCSI Bahrain, students are immersed in the clinical setting and experience direct patient contact from the early stages.

Study Medicine in Ireland

Ireland is renowned for its high academic standards and for its world-class medical education. The Irish universities have a long history of teaching medicine and have a strong international reputation with graduates practicing in almost 100 countries worldwide. Today, the universities are constantly innovating and provide medical training with world class faculty, state-of-the-art facilities, cutting edge research and an impressive network of teaching hospitals that provide world class healthcare to the people of Ireland. The medical degrees awarded by the Irish universities are recognized by the licensing authorities in the United States and Canada. Graduates from the Irish medical schools routinely secure prestigious residency training positions in elite institutions throughout North America.



Curriculum Integration

The programs are organized into two broad phases: pre-clinical and clinical years. There is some variation in courses among the schools, but all the essential preclinical and clinical subjects are covered. Instruction in preclinical years is through individual combinations of lectures, problem-based learning, evidence-based medicine and small-group seminars, tutorials, practicals, laboratories and computer-aided learning. Early patient contact is integrated into the curriculum with more emphasis on problem-based learning which is very popular with students. In the clinical years, students move to the university's teaching hospitals to learn on a case-by-case basis at the patient's bedside. Ireland has a worldwide reputation for the quality of its 'bedside' teaching, an art that has been developed over centuries.



Irish Medical Education

Length of the Program

The medical programs in Ireland range from four to six years in length and eligibility will be determined by your academic background. Please reference the Entry Requirements to determine which programs you may be eligible for. Atlantic Bridge will provide specific guidance on your eligibility based on the information you submit on your Application Request Form.

Six-Year Programs:

- University of Galway
- RCSI University of Medicine and Health Sciences
- RCSI Bahrain
- University College Dublin

Five-Year Programs:

- University of Galway
- RCSI University of Medicine and Health Sciences
- RCSI Bahrain
- Trinity College Dublin
- University College Cork
- University College Dublin

Four-Year Programs:

- RCSI University of Medicine and Health Sciences
- University College Cork
- University College Dublin
- The University of Limerick

Our mission: To educate, nurture and discover for the benefit of human health.

Founded in 1784, RCSI has historically been the world's most international medical school. Today RCSI has a student body representing over 60 different countries and more than 21,000 alumni working across 94 countries around the world.

RCSI's Medical School continues in the tradition as part of an innovative, world-leading international health science education and research university with schools and faculties across the health sciences spectrum. It is the largest medical school in Ireland and one of the most internationally-focused medical schools in the world. RCSI offers a five and six-year Medicine program, as well as a four-year Graduate Entry Medicine program, at the Dublin City Centre campus. So, whatever your academic background or experience to date, RCSI has a medicine program that meets your needs.

Excellence

Unlike most medical schools, which are part of large multi-faculty, government-funded universities, RCSI is an independent, not-for-profit institution. This independence allows RCSI to pursue their own priorities in the pursuit of excellence in medical education, training and research. One example of this is the recent opening of Europe's largest clinical simulation center, developed to ensure the College continues to train students with the most current and advanced curriculum and facilities.

High Impact Research

With RCSI's focus on clinical and patient-centered research, they are continually seeking out ground-breaking discoveries to address the health challenges of our time. The research agenda drives scientific breakthroughs. RCSI strategically invests in researchers and research facilities and consequently students are exposed to world class research as it happens. Top tier residency programs now expect students to have had research experience. RCSI can provide you with the research opportunities you need. During your time at RCSI, you can participate in the Research Summer School. From year one, you can spend your summer as part of a medical research team conducting clinical or laboratory research while receiving a financial stipend from RCSI.



26 York Street

Teaching Environment

In late 2017, RCSI opened its extended campus at No. 26 York Street, adjacent to the original College buildings. The new facility forms part of an extended city center campus and is home to Europe's largest clinical skills simulation facility. The 120,000 square foot complex with state-of-the-art teaching space and student facilities is poised to transform medical education. From the earliest stage of your program you will combine classroom learning with hands-on experience in the simulation facility and in real clinical environments at RCSI teaching hospitals. You will learn anatomy through regional cadaveric dissection and benefit from being taught by working surgeons and healthcare professionals. From the state of your training, you will apply what you learn in the lecture theatre to patients and clinical situations in RCSI teaching hospitals. These early clinical experiences are a combination of patient case studies, consultation labs, medical actors, volunteer patients and high-fidelity clinical simulator technologies.

International Support

The CoMPPAS (Centre of Mastery: Personal Professional & Academic Success) office is home to a dedicated multi-disciplinary team of specialists working collaboratively to facilitate and empower students to achieve their personal, academic and professional goals. The services provided by CoMPPAS allows students to maximize their potential and enhance their performance. Careerhub is RCSI's online platform which provides access to your career portfolio, resources, events, workshops and consultations. This provides the platform for RCSI to work with you individually to develop a bespoke career strategy for progression to your North American residency program.

Clinical Electives

Participation in clinical electives is very important to students entering their final years at RCSI. Electives are an enriching experience for students who work with patients in some of the world's leading hospitals offering the potential to gain valuable contacts and crucial letters of reference for future career opportunities and residency applications. Through a network of strategic partnerships, which include Johns Hopkins University, University of Toronto, University of British Columbia, University of Massachusetts Medical School, University of Pennsylvania, Northwestern University and McMaster University, RCSI offers a significant number of clinical electives in North America. These places are managed by RCSI's Electives Team and students apply for electives at the start of their clinical training. The Electives Team at RCSI assists students in maximizing their efforts to achieve their long-term career goals.

Life in Dublin

Dublin is the perfect city for student living. It is exciting, multicultural, safe and easy to navigate. The RCSI main campus is right in the heart of the action and across from one of the most beautiful parks in Europe, St. Stephen's Green. The city is packed with attractions for local and international students alike. Whether you are looking for coffee houses, theatres, music, sports fixtures, museums or any form of entertainment, Ireland's cosmopolitan capital caters for every taste.

RCSI - Key Facts

- Medical School Founded in 1784
- Globally recognized as one of the world's leading health sciences-focused Universities
- Students from 60+ countries with 21,000+ alumni working across 94 countries
- Europe's largest clinical skills simulation facility, 120,000 square foot complex with state-of-the-art teaching spaces
- Hands On Teaching environment with Early Patient Contact
- Undertake summer research and/or clinical electives at prestigious universities in Canada and the US including the Johns Hopkins Hospital Group, Columbia University Medical Center, Univ. of British Columbia and the Mayo Clinic
- Study in the heart of Dublin City, one of Europe's most historic and vibrant capital cities
- Students undertake Residency Pathway Programs for Canada and the US with the North American Students' Careers Support Team
- Impressive, modern sports facilities, libraries and student facilities with 75 separate Clubs and Societies
- Network of Teaching Hospitals including the world renowned Beaumont Hospital, RCSI's 730 bed Training and Research Center
- 100+ North American Students admitted Annually

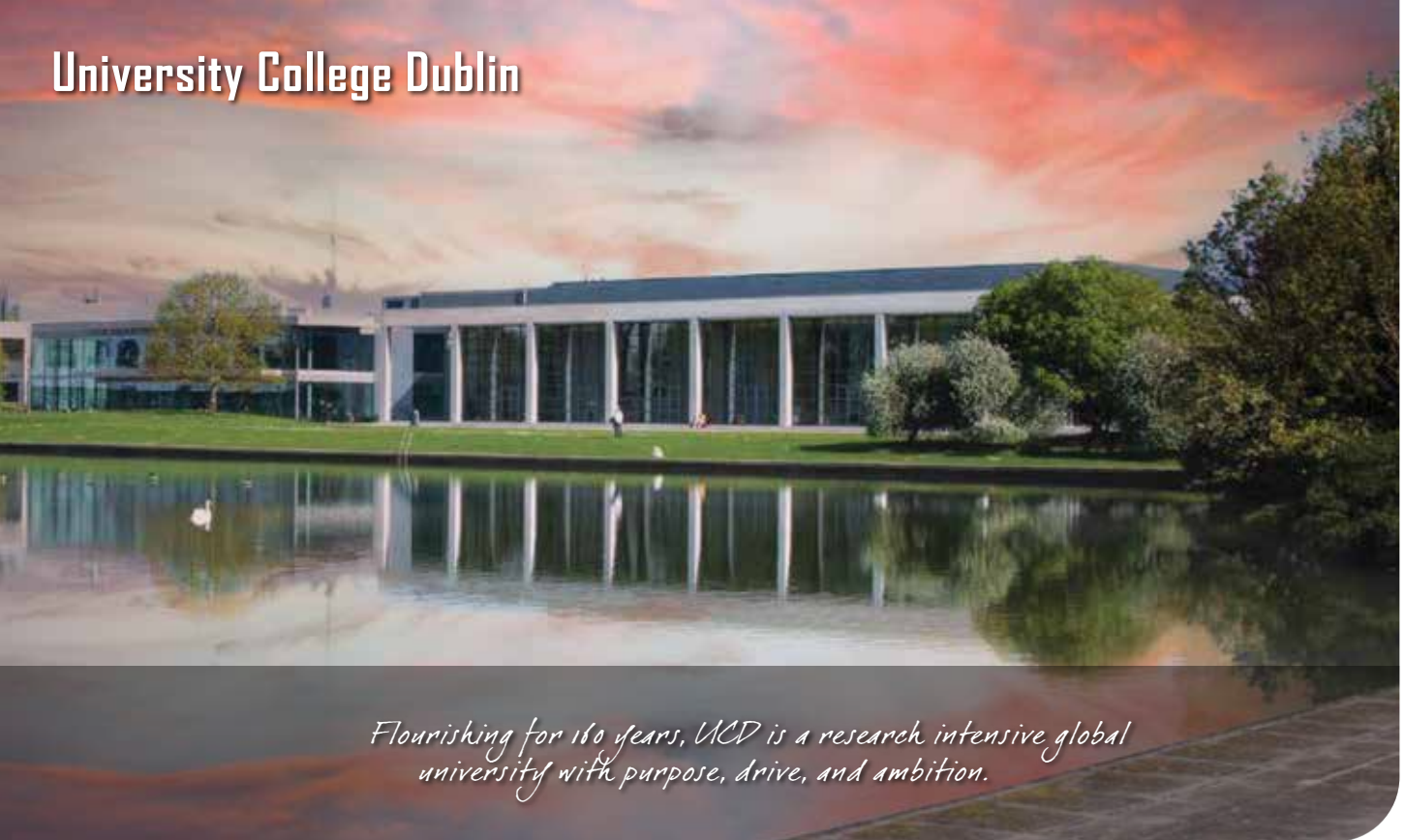
Dublin is a coastal city with incredible natural beauty, from the beaches and walks along Dublin Bay to the forested Wicklow Mountains. There are many interesting places to visit and explore, most of which are easily accessible through a convenient public transport network. The capital has a population of 1 million, including 75,000 third-level students. This makes the city big enough to have a lively social life and small enough for international students to feel they are part of Dublin life.



"With thanks to Atlantic Bridge, going to Royal College of Surgeons in Ireland has been outstanding; I've made lifelong friends, personally flourished and have had so many unforgettable experiences. RCSI has equipped me well for the future; I feel fully capable in my rotations and well prepared to match back home!"

— John-Paul Hess





Flourishing for 160 years, UCD is a research intensive global university with purpose, drive, and ambition.

As a UCD medical student, you will experience a modern, internationally recognized curriculum that introduces patient contact and clinical skills at an early stage. The modular programs combine lectures and seminars from a team of internationally renowned academics and medical practitioners, patient-led learning and clinically based real-world education at Ireland's leading network of acute and specialist teaching hospitals. You will have opportunities to benefit from a range of integrated international study options, which could take you all over the world, and to immerse yourself in the science of medicine through the acclaimed undergraduate student research program. All UCD's programs are delivered at Ireland's most diverse, student-friendly university.

Research-Led Teaching and Learning

The majority of UCD's academic staff are active researchers contributing to the discovery of new knowledge and to the continual development of the curriculum. UCD's clinicians practice in the community, in acute hospitals or in specialist care centers. Medical School faculty hold senior leadership positions within the University and across the Irish health service.

UCD's wide and dynamic research portfolio extends from its silico bioinformatics, molecular laboratory investigations of disease to clinical research evaluating new therapeutic strategies. Teaching is research-informed and research-led and in addition, UCD offers opportunities for students to undertake independent or structured research under the supervision of expert research faculty as part of, or in addition to, normal program coursework.

These opportunities include:

- The student research program
- International research electives

Patient Participation

Patient participation and care is at the heart of the academic and educational philosophy. The curriculum is integrated meaning it provides opportunities to learn biomedical principles and concepts in the context of patients and health-care. Students meet and interact with patients at the earliest possible stage and throughout their time at UCD. Students shadow family practices, train at Ireland's most extensive network of teaching hospitals and learn from patient educators.



International Elective Opportunities

Each year, UCD students compete for highly prized international clinical and research elective opportunities at international partner institutions. Through UCD's global reach, relationships have been established with some of the world's most prestigious institutions such as Harvard Medical School, Washington University, University of Pennsylvania, University of Toronto and University of British Columbia. These funded electives allow students to explore in further depth topics of relevance to their degree program. The experience, knowledge and contacts gained from these electives help significantly when applying for residencies in North America upon graduation.

Student Life

University College Dublin's extensive campus is both modern and historic. Situated in the leafy suburb of Belfield facilities include vaults of historical record, world-class teaching infrastructure and research facilities, excellent student accommodation, an extensive sports center with Olympic-size swimming pool, and innovative interactive laboratories, some of which are unique to UCD. UCD is Ireland's most globally engaged university with over 30,000 students drawn from 136 countries, including almost 4,000 students from outside of Ireland. The campus has all the facilities you would expect to find in a small town. UCD has a dedicated student support network to help ensure that each student gets the most out of their time at UCD. These services and supports encourage student welfare, inclusiveness and guidance.



St. Vincent's Hospital

University College Dublin - Key Facts

- Medical School for 165 years
- Ultra-modern campus including state of the art simulated clinical laboratory
- Internationally acclaimed Center for Health Science Research
- 1900+ Medical Students and 670+ Graduate Students
- 25% of students are international (non-EU)
- Student body from 60 nations
- 40+ Postgraduate Programs
- 180+ Academic Staff and 670+ Adjunct Faculty
- Network of 9 teaching hospitals
- North American students' careers support team
- 50+ North American students admitted annually

Medicine International Team Support:

The Medicine International Team is available to you throughout your course including important guidance around:

- Residency matching advice including assistance with your applications
- United States Medical Licensing Examination (USMLE) preparation
- A simulated OSCE for the Canadian and US Examinations
- Advanced Cardiac Life Support
- Simulated residency interviews with Career Advisers
- International Electives via Summer Electives Competition and the Clinical Elective Exchange Program



"Going to medical school in Dublin was the best decision I have ever made. The classes are challenging, exciting and the many consultant guest lecturers make the experience very practical and engaging."

— Kelsey McCarthy



University College Dublin
Ireland's Global University



Trinity College Dublin, the University of Dublin is an international university, steeped in history with a reputation for excellence in education, research and innovation.

Founded in 1592, The University of Dublin, Trinity College, is one of the finest academic institutions in the world, is steeped in history and has a global reputation for excellence in education, research and innovation. Trinity has produced some of the world's finest and most enquiring minds including the writers Oscar Wilde and Samuel Beckett (Nobel Laureate), the scientists William Rowan Hamilton and Ernest Walton (Nobel Laureate), the father of political philosophy Edmund Burke, and former President of Ireland and UN High Commissioner for Human Rights Mary Robinson.

Students and Staff

For over 400 years Trinity has been inspiring generations of students. Currently over 18,000 students from over 120 countries study at Trinity College. 28% of the student body are from outside Ireland, providing a true global community on Trinity's campus. Trinity College is proud of its impressive and international academic staff who are globally amongst the most influential and respected in their fields.



The Medical School

Research University

In today's world it is more important than ever that students receive their education in a research-centered, collaborative environment and that they have the opportunity to work with academic leaders. The ethos of the College is to encourage students to get involved in research and to that end Trinity College is a member of the prestigious League of 23 European Research Universities (LERU).

The Medical School

Medicine has been taught at Trinity College since 1711. The medical degree program at Trinity is five years in length. Over the first and second years, students study the structure and function of the human body in health and disease and begin to acquire experience in clinical skills. A research module, beginning in second year, provides a sound understanding of the principles of research in medicine. Exposure to the hospital setting occurs progressively from the end of the second year. The hospital attachments program begins with an introductory clinical course in the final term of the second year, comprising lectures, clinical demonstrations and bedside tutorials. From the beginning of the third year, students attend hospitals, taking rotations in Medicine, Surgery, Pediatrics, Psychiatry, Obstetrics and Gynecology, Community Health, General Practice and Ophthalmology/ Otolaryngology.

International Clinical Electives

The School of Medicine has a strong international network and students have the opportunity to gain experience overseas as part of the electives program. Students are required to complete clinical electives totaling 12 weeks by the final medical year and these can be undertaken in a hospital, clinic or research laboratory of the student's choice at home or abroad. It is especially important for North American students to undertake clinical electives in North America. The school has extensive elective links which include Columbia University (New York, NY), Georgetown University (Washington, DC), University of Pennsylvania (Philadelphia, PA), Northwestern University (Chicago, IL), Johns Hopkins University (Baltimore, MD), University of Illinois at Urbana-Champaign (Champaign, IL), National University of Singapore and American University of Beirut Medical Centre. Clinical electives are also located and arranged by the students themselves and serve as an important part of a student's application for residency.



Trinity's Student Global Room

Trinity College - Key Facts

- Medical School for 300+ Years
- Internationally recognized as one of the leading Universities of the World
- International student body with 28% of students from outside Ireland
- Leading research-intensive institution,
- Nine Elite teaching hospitals
- Ten Affiliated Medical Research Units
- The center for Arts and Culture in Dublin City
- Magnificent, Historic, Center City Campus
- North American students' careers support team
- 25+ North American students admitted annually

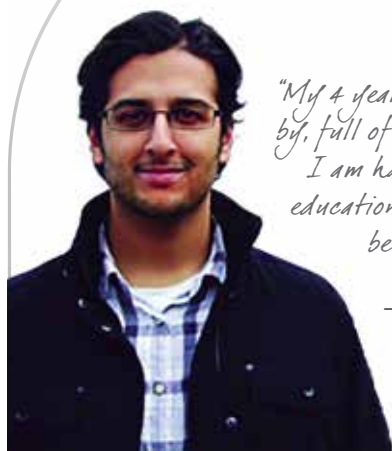
Medicine International Team Support

The medical school's International Team assists and guides students as they navigate their pathway home to practice medicine. Supports include:

- Supports for student taking Canadian and US Licensing Exams e.g. USMLE, MCCQE
- Arranging suitable clinical electives in North America
- Assist and guide students in preparing their residency applications and provide the specific letters of reference required by residency programs



The Long Room in Trinity College: Home of 200,000 Books

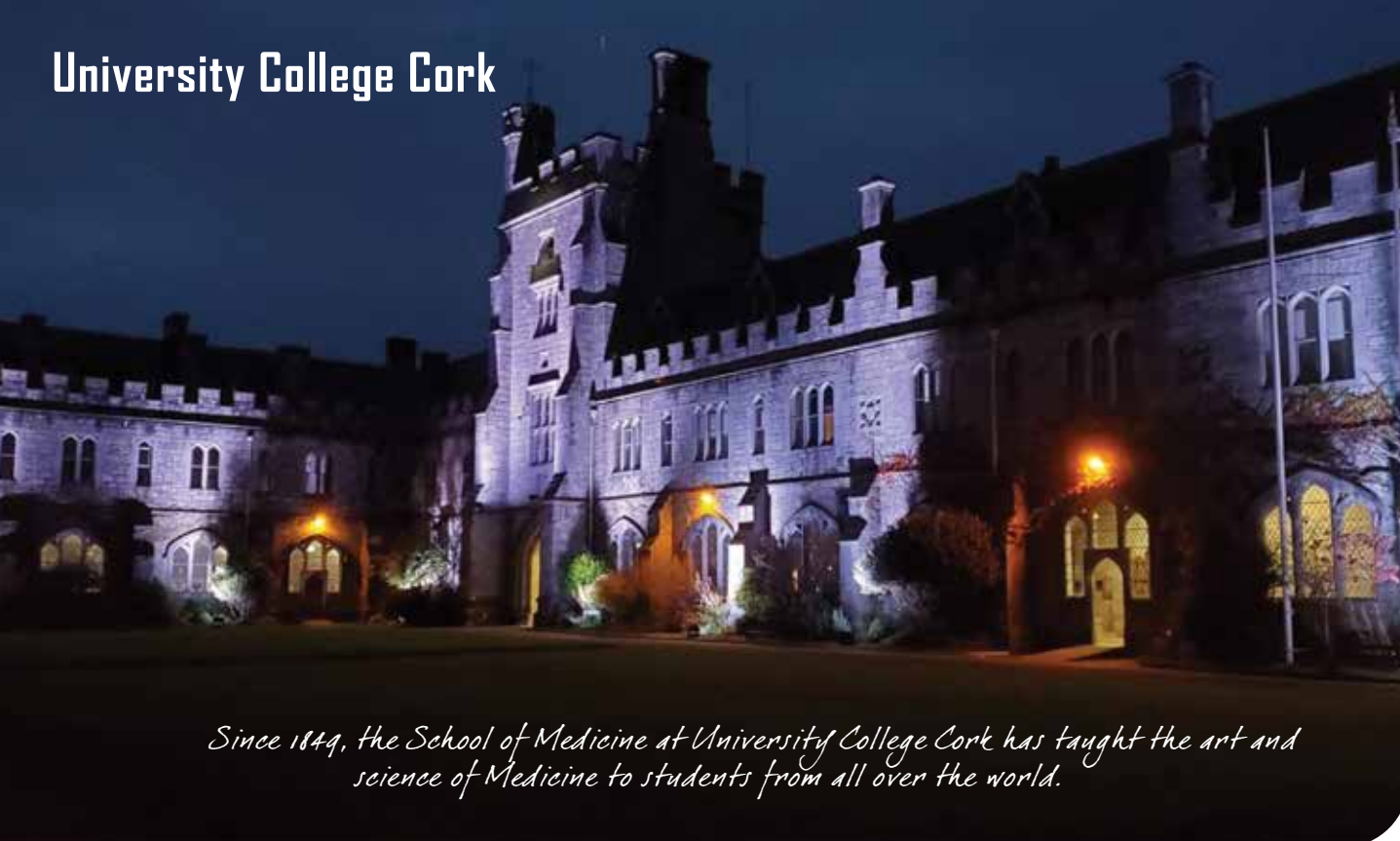


"My 4 years at Trinity College Dublin have flown by, full of study, adventure, and new experience. I am happy I chose Trinity for my medical education and have seen how much better it is becoming with each passing year."

— Jasdeep Badwal



Trinity College Dublin
Coláiste na Tríonóide, Baile Átha Cliath
The University of Dublin



Since 1849, the School of Medicine at University College Cork has taught the art and science of Medicine to students from all over the world.

A recognized Medical School was established in the city of Cork in the 18th century, variously dated between 1722 and 1775. In 2004, the Faculty of Health Sciences launched a \$200 million expansion with the development of new state-of-the-art facilities, including the Brookfield Health Sciences Complex and extended academic and research facilities. Today, University College Cork is the principal university in the South West of Ireland and the largest outside Dublin. UCC has a student body of over 20,000 including 3,000 international students from over 100 countries.

The Medical School

UCC trains 21st Century doctors for 21st Century healthcare, using a world-class curriculum and state of the art teaching facilities. Central to this is early patient contact and small group teaching. UCC's extensive network of teaching hospitals include the major regional hospitals and the world renowned Trauma Centre.

UCC is one of Ireland's premier research institutions and it is no surprise that research is also top of the agenda for UCC's medical students.

Life as a Medical Student

The Medicine curriculum in UCC places emphasis on clinical instruction. A distinctive feature is small-group, patient-centered teaching, in which students learn the skills of listening and communicating, history-taking and clinical examination. The curriculum reflects current best practice in medical education and is under constant review and evaluation. The curriculum is further enhanced by a wide range of student-selected modules, from research projects to humanities' workshops.

Key features of the curriculum are:

- Integrated, system-based program
- Clinical teaching from first week in Graduate Entry (2nd Year for the 5 Year Program)
- Self-directed, small-group teaching
- Case-based learning
- Emphasis on professionalism and team-work
- Research focused



UCC's Garden Campus

Research:

Research is a key element of Medicine at UCC, and importantly all students complete a research project in their final year. The research project is undertaken in association with clinical and translational principal investigators, research groups and research institutes at UCC. Medical students are frequent recipients of research scholarships (Health Research Board, Science Foundation Ireland). Increasingly, students present their research at national and international meetings and publish their work in peer reviewed journals. Including a research element to your medical degree has never been more important as top tier North American residency programs are placing increasing emphasis on students presenting research experience on their residency applications.

Facilities

University College Cork combines a rich tradition of teaching, research and scholarship. The Brookfield Health Sciences Complex (BHSC) is a large, bright and modern building, just a short walk from main campus. Most of the basic sciences and clinical skills teaching take place in BHSC. The Physiology Department and the world-renowned FLAME Anatomy lab are located in the nearby Western Gateway Complex, linked to BHSC by a footbridge over the river Lee. UCC's extensive network of teaching hospitals include the major regional hospitals including University Hospital and The Mercy Hospital in Cork City.

Student Experience

In addition to UCC's excellent academic reputation and facilities there are other reasons for choosing to study Medicine at UCC. A number of factors combine to make the medical student journey at UCC a very enjoyable and memorable experience. The UCC campus is one of the most beautiful in Europe. Old limestone buildings blend seamlessly with stunning modern architecture against a backdrop of mature gardens. The idyllic garden campus on the banks of the River Lee is within walking distance of a lovely city with a vibrant café culture and nightlife. Students live close to the university, making College Road and nearby streets a bustling close-knit student 'quartier' where friends are only a few doors away. Students from Ireland and from all over the world find it easy to settle in and make new friends.

The sporting and exercise facilities at the Mardyke Arena are world-class and UCC has a host of different clubs and societies. The UCC Student Experience is unrivalled – a beautiful campus, amazing sports facilities, and a gem of a city – and all within walking distance.

University College Cork - Key Facts

- Medical School for 250+ Years
- Ranks in the top 2% of universities worldwide.
- Superb modern facilities in purpose-built medical school
- Small class size, Early Clinical Contact and Case-Based small group learning
- 11 Teaching Hospitals driving healthcare in the Southwest of Ireland
- Leading European Research Institution
- The center of Culture and the Arts in the Southwest of Ireland
- International student body with over 3,000 international students at UCC
- Delightful garden campus on the banks of the River Lee
- Unique opportunities to complete clinical rotations in Canada
- North American Students' Careers Support Team
- 60+ North American Students admitted Annually

Medicine International Team Support:

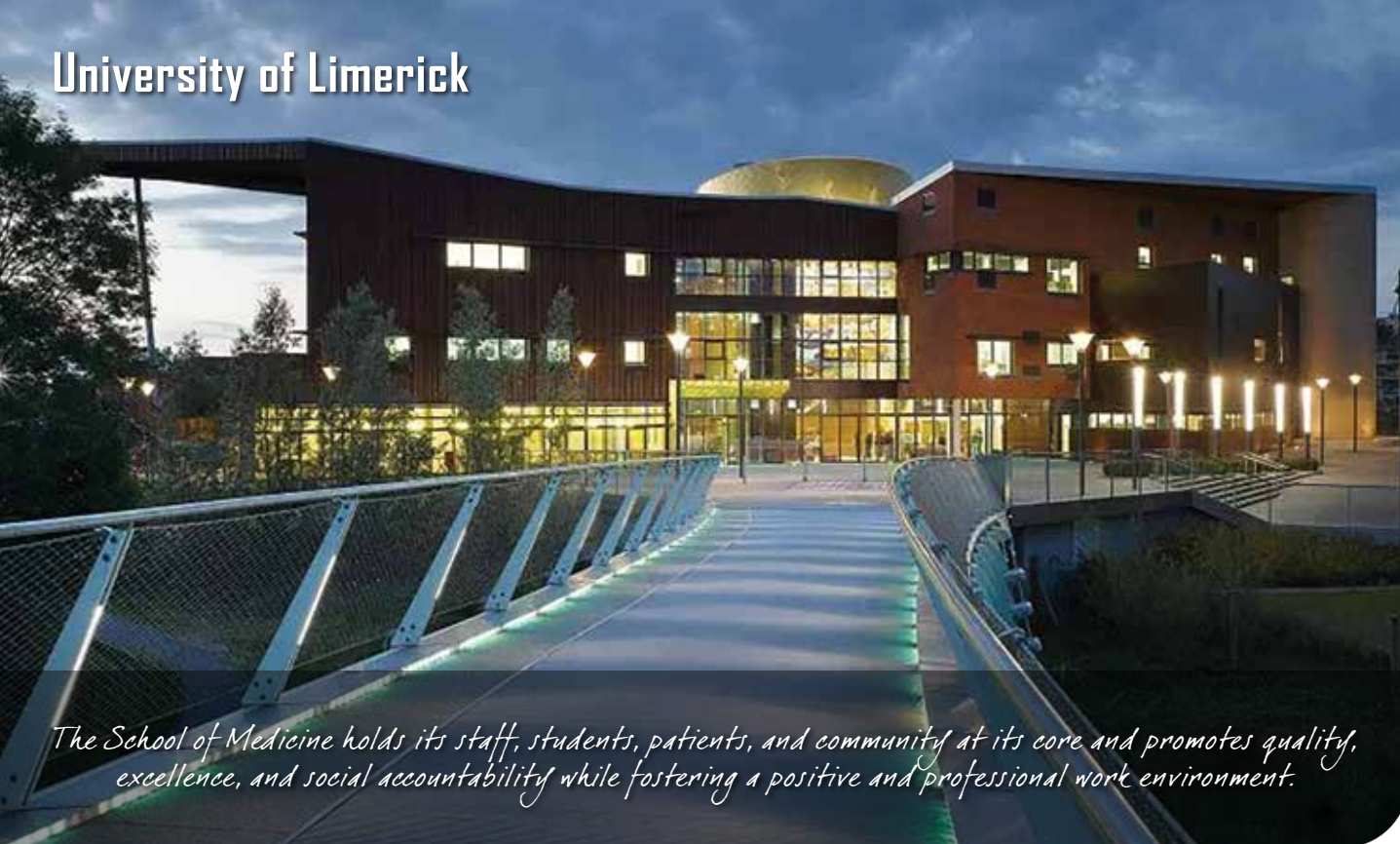
The medical school's International Team assists and guides students as they navigate their pathway home to practice medicine. Supports include:

- Supports for student taking Canadian and US Licensing Exams e.g. MCCQE, USMLE (Board Exams)
- Assisting students in arranging suitable clinical electives in North America
- Assist and guide students in preparing their residency applications and provide the specific letters of reference required by residency programs.



"The program structure and content [at University College Cork] highly aligned to North American expectations, making graduates from Irish medical schools well suited to pursue residency in Canada or the States. I highly recommend applying to medical school in Ireland through Atlantic Bridge if you also have a dream to become a doctor, as I have."

— Dr. Oleksandra Kaskun



The School of Medicine holds its staff, students, patients, and community at its core and promotes quality, excellence, and social accountability while fostering a positive and professional work environment.

The University of Limerick (UL) is an independent, internationally focused university with over 16,300 students and 1,700 staff. It is a young, energetic and enterprising university with a proud record of innovation and excellence in education, research and scholarship. The University is situated on a superb riverside campus of over 130 hectares with the River Shannon as a unifying focal point. Located 5km from Limerick city and 20km from Shannon International Airport, the University boasts outstanding recreational, cultural and sporting facilities, which further enhance this exceptional learning, research and working environment. The UL campus is truly one of the most beautiful university campuses anywhere in the world. Visitors never fail to be impressed by this peaceful green place with its trees, its fountains and the beautiful river Shannon flowing majestically through it all. In spring, UL is a symphony of birdsong, while in autumn, it is a celebration of color. Limerick is Ireland's third largest city, with a population of over 100,000. Founded by the Vikings in the 9th century, it is one of Ireland's oldest cities. Sitting on the banks of the picturesque River Shannon, Limerick is a vibrant city boasting a rich culture. Whether you are diving into Limerick's ancient history or enjoying its selection of bustling pubs, cafes and restaurants, Limerick is sure to win you over.



search programs that positively impact the health and well-being of our global community. Through an inclusive, collaborative and supportive culture UL delivers inspiring and distinctive education and research programs of the highest quality, producing outstanding, internationally recognized graduates and leaders in Medicine and Health, enhancing healthcare and its delivery to patients and communities. The Medical School has an extensive network of regional, general and specialty hospitals where clinical instruction is delivered. In addition the Medical Degree Program uses an extensive network of Physicians in General Practice where students receive extensive training in primary care clinics. From day one of the BMBS program, students working in small groups develop skills through an integrated, problem-based curriculum. The problem-based method of learning promotes the development of critical clinical reasoning, team, leadership and lifelong learning skills that are essential to working in clinical practice on graduation. Clinical exposure is introduced in Year 1 through clinical and communication skills training and through the Early Patient Contact program.

In keeping with the School's drive for excellence, assessment at the School adheres to international best practice standards. A blend of assessment instruments is used to evaluate students fairly and reliably. We operate robust internal and external quality assurance (QA) procedures and respond to feedback from multiple sources, including the students. The QA processes ensure that the Medicine program adheres to the highest standards and that the curriculum remains dynamic and in line with the rapidly advancing changes in medicine in the 21st century.

The Medical School

The School of Medicine was established in 2007 as the first four-year, graduate-entry medical school in Ireland and the first to integrate problem-based learning techniques into its medical degree curriculum. The School of Medicine aims to be a world class medical school delivering leading edge education and re-

Research

Medical students are encouraged to pursue a research project during their program. Research at UL's School of Medicine spans biomedical sciences, medicine, surgery, primary and pre-hospital care. With a focus on exploring the fundamentals of health and illness, Medical School researchers aim to contribute new knowledge relevant and translatable to real-world challenges. Recent research in abdominal anatomy has changed the course of anatomical teaching. UL's Centre for Interventions in Infection, Inflammation & Immunity (4i) brings together like-minded researchers from across the University, the clinical campuses and the General Practice network affiliated with UL School of Medicine. The Centre provides the vision, sense of identity, support and guidance that enables existing and new researchers as they continue to contribute to medical knowledge. Complementing the curriculum, students are encouraged to engage with researchers seeking solutions to real clinical challenges.

Medicine International Team Support

Students registered on the Medicine program can opt to complete clinical electives overseas. Completing a clinical elective in North America is essential to securing a residency in the Canada or the United States. The School of Medicine has entered into formal arrangements with McMaster University and Rutgers University to provide students with clinical electives. In addition to formal arrangements, strong links have been forged with a number of North American hospitals & clinics to provide students with clinical electives in a variety of specialties. Feedback from North American institutions that have enrolled UL School of Medicine students on elective programs have commented on their clinical proficiency and exceptional medical communication skills. Students applying for an elective are supported by members of the School of Medicine International Admin Team. The International Admin Team also assist students with preparing for Canadian and US Licensing Exams e.g. MCCQE and USMLE (Board Exams). They also provide invaluable help and advice to students preparing their residency applications.

University of Limerick - Key Facts

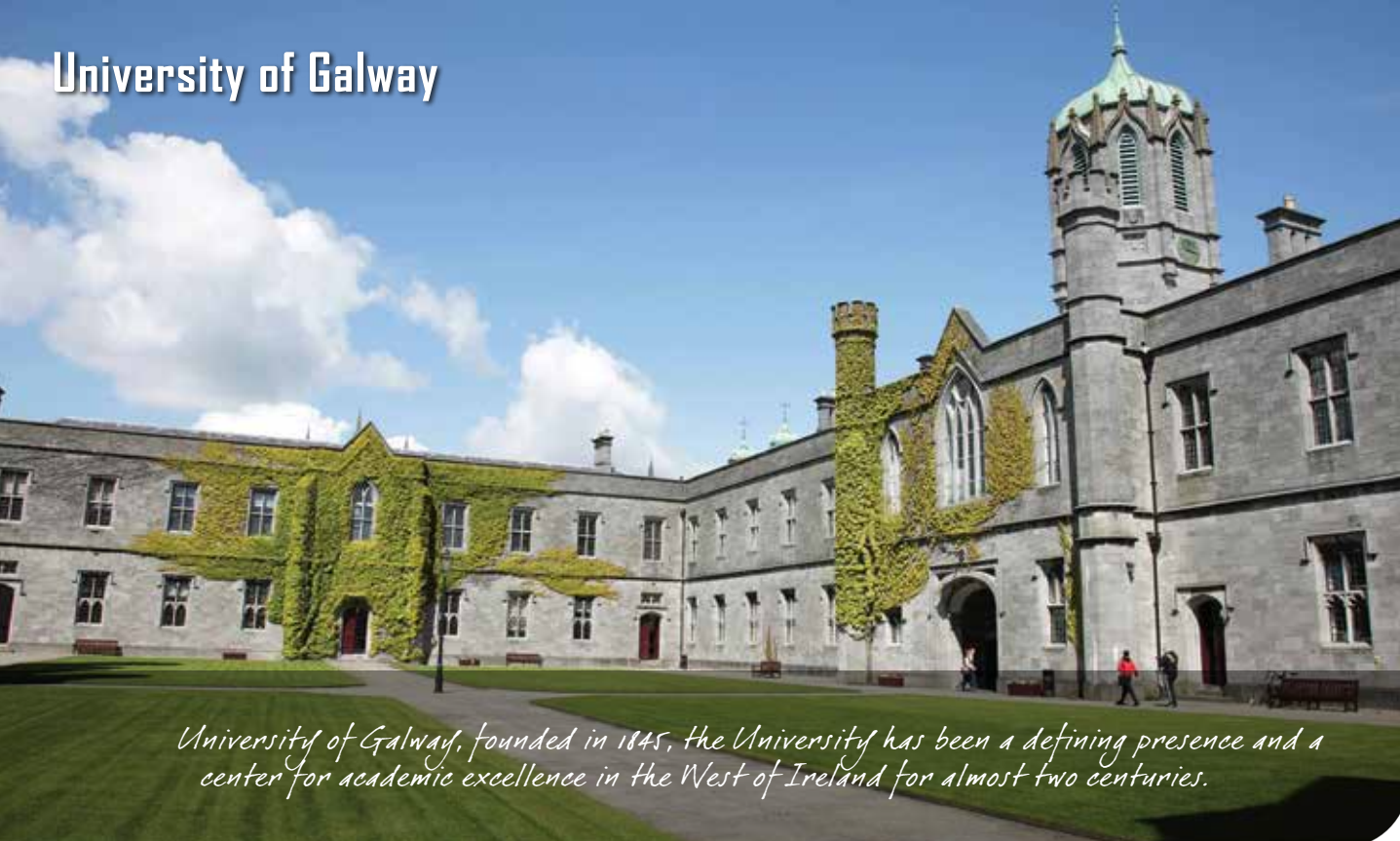
- Medical school founded in 2007 delivering a modern, Problem Based curriculum
- 300 Faculty and Medically Trained Tutors for approximately 600 Medical Students
- Small Group integrated Problem Based Learning
- Extensive network of Regional, General and Specialty Hospitals providing Healthcare to the midlands of Ireland
- Graduate Entry only
- World Class research at UL's Center for Interventions
- Superb riverside campus of 130 hectares with new, purpose built Medical School
- Vibrant, modern city against a backdrop of a 9th Century Viking City
- North American Students' Careers Support Team
- 80+ North American Students admitted Annually



"The style of learning used at the [University of Limerick] is problem-based learning (PBL) [which] involves learning the material primarily on your own, and with fellow classmates, under the guidance of physician tutors. For individuals who are motivated, self-directed, and work well in groups, the PBL style can be a very welcome substitute to the traditional didactic style of instruction."

— Chris Dockx





University of Galway, founded in 1845, the University has been a defining presence and a center for academic excellence in the West of Ireland for almost two centuries.

The unique combination of a bustling city and a thriving university means that Galway has something to offer everyone and caters to young people like few other places. Located on the stunning west coast of Ireland, Galway is steeped in history but with a contemporary vibe. Even though it is one of the fastest growing cities in Europe, Galway has retained the friendly character and intimate feel that make it so popular. Galway is young at heart, with students making up 20% of the population and is essentially a historic College Town. University of Galway ranks among the leading universities in the world. With prestigious history spanning almost two centuries the spectacular location boasts the unique landscape and culture of the west of Ireland. It all began in 1845, that was the year Queen's College Galway was founded. Following construction of the iconic Quadrangle building, the University opened its doors four years later to the first cohort of just 68 students. In 1997 the University was renamed the National University of Ireland, Galway and was again renamed in 2022 to The University of Galway. Over the years the University has grown significantly in size and reputation and today has a student population of over 18,000 students. Since 2000, the University has invested \$400 million in new buildings and facilities across campus including the world renowned Biomedical Science Research Center and the state of the art Human Biology Building attached to the medical school.



Biomedical Sciences

The Medical School

Medicine has been taught at University of Galway for 175 years and consequently the medical school has a long tradition of clinical education. University of Galway Medicine was amongst the

earliest medical schools to pioneer hospital-based and bedside teaching. Today, faculty recruited from around the world, engage to deliver University of Galway's world renowned bedside clinical teaching to their students. Galway medical graduates are highly sought-after physicians and surgeons across the globe and this is reflected in the success of their graduates in securing residency in North America. Both a five year and a six-year medicine program are offered. The medical school works closely with several teaching hospitals including University Hospital Galway, the main regional 500 bed hospital. Other clinical partners provide programs that are grounded in specific clinical expertise e.g., maternity, psychiatry, etc. The Medical School also fosters the development of your medical knowledge by providing significant patient contact in a safe and supervised learning environment. The Medical School's simulation based education activities give you exciting opportunities for clinical learning that were previously unavailable. You can now communicate with, diagnose and manage a simulated patient, perform procedures on them and work within a multidisciplinary team to manage their care, all in a safe supportive simulated clinical environment. You will receive encouragement and support from faculty and even from the simulated patient!

The special study module program allows students to focus on areas of particular interest to them and their career objectives and benefit from working closely with expert role models. Participation in the summer research program will cultivate curiosity and a passion for inquiry. The multi-ethnic student body will expose students to the benefits of learning about other cultures and will promote respect for diversity and tolerance.

As a medical graduate you will exemplify the attributes valued by University of Galway's Medical School. The Medical School campus is based adjacent to University Hospital Galway. As you gain experience you will assume greater responsibility and undertake clinical placement rotations in a network of affiliated hospitals. In addition you will be involved in the delivery of primary care in a variety of community settings.

Research

University of Galway's new €30 million Biomedical Science building is home to over 300 scientists and researchers, working in areas such as regenerative medicine, stem cell research, cancer biology, and biomaterials. The Global Network program connects University of Galway with partners around the world and University of Galway researchers are actively shaping the future of medicine. Students are encouraged to include a research project during their medical degree program. Increasingly graduate medical training programs (residency programs) expect students to have participated in a research project during their medical degree. The extensive University of Galway Medical Sciences Research program presents students with lots of opportunities to pursue research projects supervised by University of Galway's world class research teams. University of Galway medical students often present their work at national and international conferences.



Downtown Galway

University of Galway - Key Facts

- Medical School for 175+ Years
- Over 200 Faculty and Academic Staff
- 10 Teaching Hospitals and 4 Regional Academies driving Healthcare in the West of Ireland
- New State-of-the-Art, Clinical and Translational Research Facility housing 300+ research scientists
- Early Clinical Exposure and State of the Art Simulated Clinical Laboratory
- Historic, Picturesque Campus in the ancient but modern, exciting and youth oriented City of Galway
- The University's diverse International Student Body with 3,000 International Students from 115 countries with 30% of each Medical Class from outside Ireland
- 90,000 Alumni in 27 Countries
- The center of Arts and Culture in the West of Ireland
- North American Students' Careers Support Team
- 40+ North American students are admitted annually

Team Support:

The medical school's International Team assists and guides students as they navigate their pathway home to practice medicine. Supports include:

- Supports for student taking Canadian and US Licensing Exams e.g. MCCQE and USMLE (Board Exams)
- One to One counselling with University of Galway's most experienced advisors
- Assistance arranging suitable clinical electives in North America
- Assist and guide students in preparing their residency applications and provide the specific letters of reference required by residency programs.



"The education here at [University of Galway] has been outstanding. You can tell immediately that the professors really care about training excellent physicians and that they want to see you succeed. We are lucky enough to have a full cadaver lab here at [Galway] so the hands on learning starts right away!"

— Michelle Arakgi



OLLSCOIL NA GAILLIMHE
UNIVERSITY OF GALWAY

RCSI Bahrain delivers the world-renowned healthcare teaching that RCSI has become famous for. At RCSI Bahrain, students are immersed in the clinical setting and experience direct patient contact from the early stages.

RCSI Bahrain is a constituent university of RCSI University of Medicine and Health Sciences in Dublin, Ireland. The role of the university, like RCSI Dublin, is to deliver healthcare education to the highest international standards. The RCSI Bahrain campus was established in 2004 with its first intake of medical students and graduated its first class in 2010. In the period since its establishment, RCSI Bahrain has become an integral part of both the RCSI global family and of the healthcare education system in Bahrain. The University and its degrees are recognized throughout the world including Europe and North America.

About the Medical School

Students at RCSI Bahrain enjoy a large state of the art complex which was completed in October 2008. It incorporates a six-story building with modern tutorial rooms, lecture theaters, teaching and research laboratories and clinical simulation laboratories. In 2012, a large, state-of-the-art library and learning resource center was officially opened. There are extensive sports and student facilities available on campus. While most of the undergraduates are from Bahrain and the Gulf region, currently there are students representing over 20 countries attending RCSI – Bahrain including over 100 from North America. The majority of the academic staff are Irish.

When studying at RCSI Bahrain you can expect a vibrant student experience both on and off campus, with RCSI-Bahrain providing a wide range of sports, arts and social activities set within a multi-cultural environment. RCSI Bahrain offers both six-year and five-year medical degree programs. The curriculum is the same as that delivered in RCSI Dublin and students sit the same examinations at the same time as their counterparts in Dublin.

Six-Year Medical Degree

The preclinical years cover the first two and a half years. The first-year curriculum is divided into initial stand-alone modules followed by a series of integrated modules in physical, biological and chemical processes. The second and third years comprise of an integrated course in the clinical application of basic science. This course encompasses the subjects of Anatomy (including Histology and Embryology), Physiology, Biochemistry, Pharmacology and Behavioral Science, and focuses primarily, though not entirely, on the systems of the body (cardiovascular, respiratory, etc.) with introductory courses in some disciplines. The clinical course commences in the fourth year with the students spending the majority of their time in one of the College's teaching hospitals. Students complete a 33-month training period in the University teaching hospitals, during which they study twenty medical and surgical specialty courses such as Pediatrics, Psychiatry, and Surgery.



Manama City

Five-Year Medical Degree

The first and second years comprise of an integrated course in the clinical application of basic science. This course encompasses the subjects of Anatomy (including Histology and Embryology), Physiology, Biochemistry, Pharmacology and Behavioral Science, and focuses primarily, though not entirely, on the systems of the body (cardiovascular, respiratory, etc.) with introductory courses in some disciplines. During the clinical course students spend the majority of their time in one of the College's teaching hospitals. Students complete a 33-month training period in the hospitals, during which they study twenty medical and surgical specialty courses, such as Pediatrics, Psychiatry and General Surgery.

Research Summer School (RSS)

RCSI Bahrain RSS is designed to introduce students to the world of research. Having research experience is today an important part of a medical students training. The more competitive, elite graduate training programs (residencies) now expect their applicants to have been involved in research at some level during the medical training. The RSS provides undergraduate students an opportunity to become involved in research projects during the summer months. In most cases, multiple students are selected for individual projects providing students the opportunity for local, international and interdisciplinary peer collaboration. Students spend approximately 8 weeks of the summer in a non-laboratory, laboratory or clinical setting, working on a research project under the supervision of an RCSI Bahrain supervisor. At the end of the program, students are required to submit an abstract to the RCSI Bahrain International Research Day and complete and present a PowerPoint poster/oral presentation of their research findings at the conference.

Clinical Electives

Students in the clinical years are encouraged to apply for placements (electives) as visiting students in locations locally or abroad, during the summer period. Given the importance of electives to the career development of students, RCSI Bahrain has established formal and informal agreements with highly-regarded institutions around the world and continues to seek further opportunities. Partners include RCSI Dublin, American University of Beirut; Duke University, USA; Florida International University, College of Medicine, USA; Kochi University Japan; Johns Hopkins Singapore and many others. The University is also a member of the Global Education in Medicine Exchange (GEMx) and the Global Health Learning Opportunities Collaborative (GHLO), facilitating global mobility for student electives.

Living in Bahrain

Bahrain is a very modern country renowned for its traditional culture and beauty, but also for its open-mindedness, and multi-cultural population with many expats living and working in Bahrain. The people are welcoming and friendly and the peaceful environment is perfect for studying. The city of Manama is replete with cafés and restaurants, the weather is always good and the ocean is never more than 10 minutes away! The school offers a

RCSI Bahrain - Key Facts

- Student community from 40 nations
- Founded on 230 years of RCSI delivering medical education
- 2,000 alumni in 25 countries
- Degrees recognized globally
- International Faculty
- Early patient contact
- Ultra-modern campus and teaching hospitals
- Center for Medical Research in the Middle East
- North American students' careers support team
- 20+ North American students admitted annually

buddy program for newcomers which is extremely popular with the incoming students. Furthermore, student led clubs and societies will definitely make your experience at RCSI Bahrain memorable. With so many different and unique clubs, you will never find yourself bored when you're not studying.

The new sports facilities at RCSI Bahrain are world class with a new fully lit soccer/football artificial turf pitch and hardwood floored basketball court and a state-of-the-art gym.

It's easy to see why RCSI Bahrain is doing a fine job establishing itself as the place to study medicine in the Middle East.

Medicine International Team Support:

The medical school's International Team assists and guides students as they navigate their pathway home to practice medicine. Supports include:

- Supports for student taking Canadian and US Licensing Exams e.g. MCCQE and USMLE (Board Exams)
- One to One counselling with experienced advisors
- Assistance arranging suitable clinical electives in North America
- Assist and guide students in preparing their residency applications and provide the specific letters of reference required by residency programs.



"From day 1, I couldn't miss noticing the diversity and inclusion the [RCSI-Bahrain] community has. In my opinion, it's an added value which provides a unique culture mix that enables you to learn, understand and experience people from backgrounds and cultures different to yours. It's like traveling the world in 5 years and not having to purchase a plane ticket."

— Nawal Almohamad



Entry Requirements

Bachelor's degree with an MCAT/ GAMSAT

Students with an undergraduate degree and MCAT/GAMSAT are eligible to apply to the 4-year graduate entry medical degree programs. The MCAT/GAMSAT must be written no later than April 30th of the year of entry and an undergraduate degree must be awarded by August of the year of entry to apply to the following 4-Year Programs.

- University College Cork
- University College Dublin
- University of Limerick
- Royal College of Surgeons in Ireland

Additionally, applicants who have completed an undergraduate degree before September Entry are eligible to apply to the following 5-Year programs (MCAT/GAMSAT not required)

- Trinity College Dublin
- University of Galway
- Royal College of Surgeons in Ireland Bahrain

Bachelor's degree without an MCAT/ GAMSAT

Applicants who have completed an undergraduate degree before September Entry are eligible to apply to the following 5-Year programs. (MCAT/GAMSAT not required)

- Trinity College Dublin
- University of Galway
- Royal College of Surgeons in Ireland Bahrain

Students who have completed an undergraduate degree before August of the year of entry are not eligible to apply to the 5-year programs at Royal College of Surgeons in Ireland, University College Dublin, and University College Cork. Students with an undergraduate degree are expected to take the MCAT/GAMSAT and apply to the 4-year graduate entry programs at these three universities or apply to the 5-year programs listed above.

One or More Years of College or University

(no degree by August of year of entry)

Applicants currently attending College/University but will not have an undergraduate degree by the August of the year of entry are eligible to apply to the following 5- year programs:

- University College Cork
- University College Dublin
- University of Galway
- Royal College of Surgeons in Ireland
- Royal College of Surgeons in Ireland – Bahrain*

Applicants are expected to present university level courses in Chemistry, Biology, and either Math or Physics.

If in this category, you may also be eligible for a 6-Year Program. The Admissions Committees will determine the program to which you are most suited based on your academic background.

*This does not apply to RCSI Bahrain where you would be eligible for a 6-year place.

High School with AP Exams or IB Diploma

Students who have taken biology, chemistry, and either physics or mathematics and present AP Examinations may apply to the following 5-Year Programs. Specific requirements vary by school although AP Chemistry is required by all schools.

- University College Cork
- University College Dublin
- University of Galway
- Royal College of Surgeons in Ireland
- Royal College of Surgeons in Ireland Bahrain

Students who are presenting an IB Diploma may apply to the following 5-Year and 6- Year Programs. Specific requirements vary by school, although Chemistry at Higher Level is required for the 5-Year program.

- University College Cork
- University College Dublin
- University of Galway
- Trinity College Dublin
- Royal College of Surgeons in Ireland
- Royal College of Surgeons in Ireland Bahrain

Students presenting AP examinations or an IB Diploma can also be considered for the 6-year programs. There are many variables, including the mix of subjects and scores obtained; therefore, on occasion students may be considered for a 6-year offer. Please refer to the Atlantic Bridge website for more specific guidance.

High School Diploma

The following 6-Year programs are designed for applicants entering directly from High School and who have taken biology, chemistry, and either physics or mathematics.

- University College Dublin
- University of Galway
- Royal College of Surgeons in Ireland
- Royal College of Surgeons in Ireland Bahrain

Atlantic Bridge will provide specific guidance on your eligibility based on the information you submit on your Application Request Form.

Graduates of Irish Medical Schools regularly secure residency programs at elite institutions in the United States and Canada (see List of Residencies P20-21). Most Canadian students apply to both the U.S. and Canada.

Through years of collaboration, Irish universities have developed close ties with US and Canadian Universities to develop an impressive network of clinical programs where our students undertake elective rotations during their medical degrees. This is a significant help in developing contacts and exposure to North American residency programs and a key reason why Ireland is the most popular choice for North Americans seeking a medical degree abroad.

With Ireland only 6 hours flight time from the East Coast of North America, navigating these valuable clinical opportunities very manageable.

Another option is to pursue an additional year of training in Ireland, the Internship Year. This is a paid position where the new graduate undertakes a year of training at a teaching hospital in Ireland. Unlike applying for residency in North America the internship year allows new physicians to experience a range of specialties in a hospital setting before choosing the specialty they would like to pursue. In recent years the Irish Health Service has significantly increased the number of Internship places available to non EU graduates with all non-EU applicants being accommodated in 2020, 2021, 2022, and 2023.

The transition to medical training in Ireland from North America is very straightforward as the systems of education are very similar. With almost 1,600 North Americans studying medicine in Ireland there is plenty of support amongst your peers (see below, NIMSA and CIMSA)

NIMSA, AMSA & CIMSA

The North American Irish Medical Students Association (NIMSA), the American Medical Student Association (AMSA) and the Canadian International Medical Student Association (CIMSA) are student-run societies that support Canadian and American medical students in Ireland. Each university has its own branch of the larger society. Their objective is to build a support network of North American students for North American students. Their remit is to share information and strategy around Board Exam prep, Clinical Elective Programs, Research Opportunities, Residency Applications etc. These societies have a close and collaborative working relationship with School Administrators and are a vital part of the conversation in organizing a smooth transition to residency programs in North America. On entry students are encouraged to join these societies and proactively engage in a series of practical career-focused workshops, and attend hosted Canadian and US medical specialty talks and webinars. These societies have been in place for decades and provide a vital source of accurate information and support for North American students.

Canadian Pathway

Medical Council of Canada Qualifying Exam 1 (MCCQE1). This exam is written in May or October.

National Assessment Collaboration Objective Structured Clinical Examination (NAC OSCE). The NAC OSCE must be completed in Canada and is only run twice per year—in March and September.

Apply with CaRMS (Canadian Residency Matching Program)

US Pathway

USMLE Part 1 – after pre-clinical completed

USMLE Part 2 CK – during final year

Apply with ERAS (Electronic Residency Application Service)

Irish Pathway

Studying medicine in Ireland gives you the option to stay after graduation to pursue the unique one-year Internship Year. This year is a paid position and comprises of a 6 month training period in medicine and 6 month training period in surgery. Internship posts are available at teaching hospitals throughout Ireland.

Whereas the Internship year cannot be guaranteed, in recent years the Irish Health Service Executive has increased considerably the number of places available for non-EU graduates and consequently all North American graduates who applied for a place were successful in 2020, 2021 and 2022.

The internship year is popular among students who may not have decided what residency they wish to pursue or they may simply be taking more time before deciding to commit to the residency application process.

UK Foundation Year

The UK Foundation Year Program (UKFP) is a two-year, work-based training program which is intended to bridge the gap between medical school and specialty or general practice training. Foundation Year 1 (FY1) is equivalent to an internship and Foundation Year 2 (FY2) is an additional year of experience. Importantly, it can then be followed by specialty training which ranges from 3 years (for General Practice) to 8 years (hospital-based specialties). This training should be recognized in North America. Foundation training is paid employment and is offered through British Health Service hospitals.

Graduates from Irish medical schools are eligible to apply to the UKFP. Irish graduates submit an Eligibility Application prior to the UKFP application on the Oriel website (national online application system). Eligibility applications are typically submitted in the month of August before the final year of medical school. Once the UK Foundation Program Office (UKFPO) deems that applicant as eligible, they may then pursue the main UKFP application.

2023 Residency Match Data - USA

(The following is a selection of the residency placements secured by Atlantic Bridge Program graduates in 2023)

Specialty	Location	State
Anesthesiology	Mayo Clinic - Rochester	Minnesota
Anesthesiology	SUNY HSC Brooklyn	New York
Child Neurology	SUNY Health Science University at Brooklyn	New York
Clinical Pathology	Yale University	Connecticut
Diagnostic Radiology	Bridgeport Hospital	Connecticut
Emergency Medicine	Barnes Jewish Hospital	Missouri
Emergency Medicine	Baylor Scott & White Medical Center	Texas
Emergency Medicine	Central Michigan University	Michigan
Emergency Medicine	Central Michigan University	Michigan
Emergency Medicine	Franciscan Health Olympia Fields	Illinois
Emergency Medicine	OBH Brookdale University Hospital Medical Centre	New York
Emergency Medicine	Yale University	Connecticut
Family Medicine	JFK University Medical Center	New Jersey
Family Medicine	Albany Medical Center	New York
Family Medicine	Creighton University Omaha	Nebraska
Family Medicine	Dartmouth College	New Hampshire
Family Medicine	Grand Strand Reg Medical Center	South Carolina
Family Medicine	Guthrie/Robert Packer Hospital	Pennsylvania
Family Medicine	Indiana University School of Medicine	Indiana
Family Medicine	JFK University Medical Center	New Jersey
Family Medicine	Mayo Clinic	Minnesota
Family Medicine	Mayo Clinic School of Graduate Medical Education	Minnesota
Family Medicine	Texas Tech University Affil-EI Paso	Texas
General Surgery	Ascension St Vincent Hospital	Indiana
General Surgery	Atlanta Medical Center	Georgia
General Surgery	Beth Israel Deaconess Medical Center	Massachusetts
General Surgery	Geisinger Health System	Pennsylvania
General Surgery	Hospital of the Univinversity of Pennsylvania	Pennsylvania
General Surgery	Mayo Clinic School of Grad Med Education	Minnesota
General Surgery	Medical University of South Carolina	South Carolina
General Surgery	Nazareth Hospital	Pennsylvania
General Surgery	Southern Illinois University School of Medicine & Affiliate Hospitals	Illinois
General Surgery	St Agnes Hospital	Maryland
General Surgery	University of Kansas School of Medicine	Kansas
General Surgery	University of Pennsylvania	Pennsylvania
Internal Medicine	Abington Memorial Hospital	Pennsylvania
Internal Medicine	Albany Medical Centre	New York
Internal Medicine	Ascension St John Hospital	Michigan
Internal Medicine	Brown University	Rhode Island
Internal Medicine	Brown University/Kent Hospital	Rhode Island
Internal Medicine	Case Western/University Hospital Cleveland Medical Center	Ohio
Internal Medicine	Hospital of the Univinversity of Pennsylvania	Pennsylvania
Internal Medicine	Indiana University Southwest	Indiana
Internal Medicine	Lahey Clinic	Massachusetts

Specialty	Location	State
Internal Medicine	Lankenau Hospital	Pennsylvania
Internal Medicine	Lankenau Medical Center	Pennsylvania
Internal Medicine	Lewis Gale Medical Center	Virginia
Internal Medicine	MedStar Washington Hospital Center	Washington DC
Internal Medicine	NYP Brooklyn Methodist Hospital	New York
Internal Medicine	Pennsylvania Hospital	Pennsylvania
Internal Medicine	Rutgers New Jersey Medical School	New Jersey
Internal Medicine	Scranton	Pennsylvania
Internal Medicine	St Elizabeths Medical Center	Massachusetts
Internal Medicine	Texas Health Resources	Texas
Internal Medicine	University of Hawaii	Hawaii
Internal Medicine	Westchester Medical Center	New York
Internal Medicine	Yale University	Connecticut
Internal Medicine	Greenwich Hospital	Connecticut
Internal Medicine	Jacobi Medical Centre/Einstein	New York
Internal Medicine	Lankenau Medical Centre	Pennsylvania
Internal Medicine	Morristown Medical Centre	New Jersey
Interventional Radiology	Michigan State University	Michigan
Interventional Radiology	Spectrum Health/Michigan State University	Michigan
Emergency Medicine	Louisiana State University School of Medicine	Louisiana
Neurology	Childrens National Medical Center	Washington DC
Neurology	New York University	New York
Obstetrics/Gynecology	George Washington University	Washington DC
Obstetrics/Gynecology	Hurley Medical Center	Michigan
Obstetrics/Gynecology	Rochester General Hospital	New York
Otolaryngology	Mayo Clinic School of Graduate Medical Education	Florida
Pediatrics	Albany Medical Center	New York
Pediatrics	Case Western University Hospitals Cleveland Medical Center	Ohio
Pediatrics	Dartmouth College	New Hampshire
Pediatrics	Driscoll Children's Hospital	Texas
Pediatrics	Eastern Virginia Medical School	Virginia
Pediatrics	Eastern Virginia Medical School	Virginia
Pediatrics	Jacobi Medical Center/Einstein	New York
Pediatrics	Maimonides Medical Center	New York
Pediatrics	Maine Medical Center	Maine
Pediatrics	Memorial Health University Medical Center	Georgia
Pediatrics	Rutgers W Johnson Medical School	New Jersey
Pediatrics	SUNY HSC Brooklyn	New York
Pediatrics	University of Massachusetts	Michigan
Pediatrics	Westchester Medical Center	New York
Psychiatry	MedStar Georgetown University Hospital	Washington DC
Psychiatry	University of Kansas School of Medicine	Kansas
Psychiatry/Child Psych	Samaritan Health Services	Oregon
Surgery-Preliminary	University of Arizona College of Medicine	Arizona

2023 Residency Match Data - Canada

(The following is a selection of the residency placements secured by Atlantic Bridge Program graduates in 2023)

Specialty	Location	Province
Anatomical	Pathology University of Ottawa	Ontario
Anesthesiology	University of Toronto	Ontario
Anesthesiology	University of Toronto	Ontario
Cardiac Surgery	University of Ottawa	Ontario
Diagnostic Radiology	McMaster University	Ontario
Diagnostic Radiology	University of Ottawa	Ontario
Diagnostic Radiology	University of Toronto	Ontario
Emergency Medicine	University of Ottawa	Ontario
Emergency Medicine	University of Ottawa	Ontario
Family Medicine	University of Ottawa	Ontario
Family Medicine	University of Toronto	Ontario
Family Medicine	Queen's University	Ontario
Family Medicine	University of Ottawa	Ontario
Family Medicine	Western University	Ontario
Family Medicine	McMaster University	Ontario
Family Medicine	University of Saskatchewan	Saskatchewan
Family Medicine	University of Saskatchewan	Saskatchewan
Family Medicine	University of Saskatchewan	Saskatchewan
Family Medicine	University of British Columbia	British Columbia
Family Medicine	University of British Columbia	British Columbia
Family Medicine	University of British Columbia	British Columbia
Family Medicine	University of British Columbia	British Columbia
Family Medicine	University of British Columbia	British Columbia
Family Medicine	University of Manitoba	Manitoba
Family Medicine	University of Manitoba	Manitoba
Family Medicine	University of Manitoba	Manitoba
Family Medicine	Memorial University of Newfoundland	Newfoundland
Family Medicine	Memorial University of Newfoundland	Newfoundland
Family Medicine	Dalhousie University	Nova Scotia
Family Medicine	McMaster University	Ontario
Family Medicine	Queen's University	Ontario
Family Medicine	Queen's University	Ontario
Family Medicine	University of Ottawa	Ontario
Family Medicine	University of Toronto	Ontario
Family Medicine	Western University	Ontario
Family Medicine	Queen's University	Ontario
Family Medicine	University of Toronto	Ontario
Family Medicine	McMaster University	Ontario
Family Medicine	McMaster University	Ontario
Family Medicine	University of Ottawa	Ontario
Family Medicine	McMaster University	Ontario
Family Medicine	Western University	Ontario
Family Medicine	University of Ottawa	Ontario

Family Medicine	University of Saskatchewan	Saskatchewan
Family Medicine	University of Saskatchewan	Saskatchewan
Family Medicine	University of British Columbia	British Columbia
Family Medicine	University of British Columbia	British Columbia
Family Medicine	University of British Columbia Family Medicine	British Columbia
Family Medicine	University of British Columbia	British Columbia
Family Medicine	University of British Columbia	British Columbia
Family Medicine	Memorial University of Newfoundland	Newfoundland and Labrador
Family Medicine	Memorial University of Newfoundland	Newfoundland and Labrador
Family Medicine	Memorial University of Newfoundland	Newfoundland and Labrador
Family Medicine	Memorial University of Newfoundland	Newfoundland and Labrador
Family Medicine	Dalhousie University	Nova Scotia
FRCPC Emergency Medicine	University of Toronto	Ontario
Internal Medicine	University of Ottawa	Ontario
Internal Medicine	Western University	Ontario
Internal Medicine	University of Saskatchewan	Saskatchewan
Internal Medicine	University of Toronto	Ontario
Internal Medicine	Western University	Ontario
Internal Medicine	Western University	Ontario
Internal Medicine	Queen's University	Ontario
Internal Medicine	University of Ottawa	Ontario
Internal Medicine	University of Toronto	Ontario
Internal Medicine	University of Toronto	Ontario
Internal Medicine	Western University	Ontario
Obstetrics and Gynecology	University of Toronto	Ontario
Orthopedic Surgery	University of Ottawa	Ontario
Orthopedic Surgery	University of Toronto	Ontario
Orthopedic Surgery	University of Toronto	Ontario
Orthopedic Surgery	Queen's University	Ontario
Otolaryngology - Head and Neck Surgery	University of Ottawa	Ontario
Pediatrics	University of Toronto	Ontario
Pediatrics	University of Saskatchewan	Saskatchewan
Pediatrics	University of Toronto	Ontario
Pediatrics	University of Toronto	Ontario
Pediatrics	McMaster University	Ontario
Psychiatry	Queen's University	Ontario
Psychiatry	University of Ottawa	Ontario
Psychiatry	Western University	Ontario
Psychiatry	University of Western Ontario	Ontario
Psychiatry	University of British Columbia	British Columbia
Psychiatry	Western University	Ontario
Psychiatry	Northern Ontario School of Medicine University	Ontario
Psychiatry	Western University	Ontario

2023 Residency Match Data

How to Apply

Candidates may apply to all of the Irish schools using just one common application and submitting only one set of documents (transcripts, letters of reference, etc).

Visit atlanticbridge.com, and click Request an Application to receive information about the Irish medical programs including program eligibility, application deadlines, required documents, financial aid and other guidelines.

- 1 Submit your application request form on the website
- 2 Review application packet
- 3 Submit your online application
- 4 After application submission, your admissions counselor will contact you within 1-2 business days with more details.



Your future is waiting. Applications for 2024 are now open.



Apply today!

Don't delay. Simply scan the QR code to be taken directly to the online Application Request Form.

How to Apply



Contact us at:
admissions@atlanticbridge.com
949-723-6318

Connect with Us



Peter Nealon
Executive Director



Arthur O'Malley
*Director,
Atlantic Bridge Ireland Office*



Vi Doan
*Associate Director
Manages the University of
Limerick*



Marina Mota
*Admissions Counselor
Manages Trinity College Dublin*



Lauren Nagaoka
*Admissions Counselor
Manages University College Dublin
and RCSI Bahrain*



Shaida Ulloa
*Senior Admissions Counselor
Manages RCSI and University
of Galway*

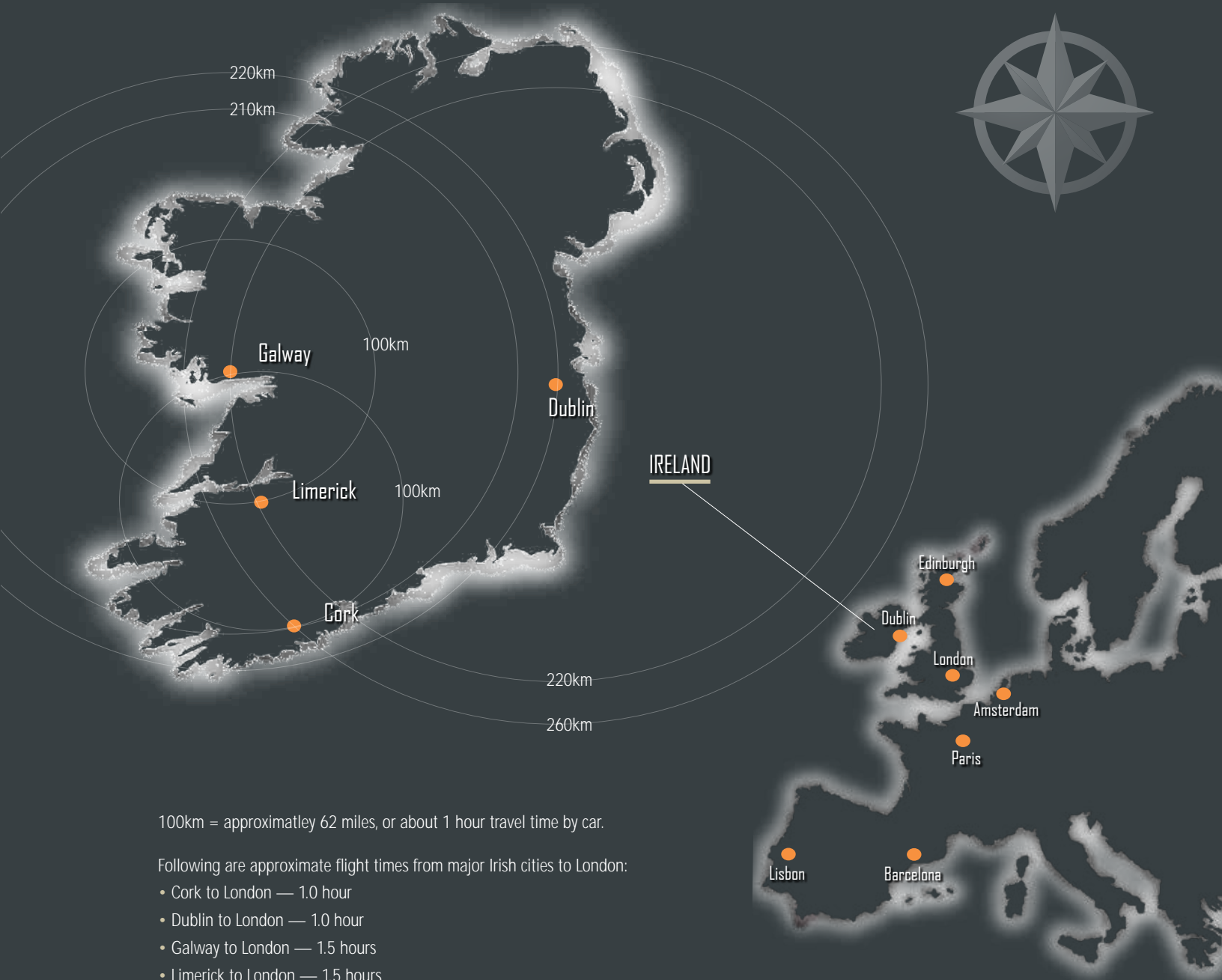


Lani Nugent
*Admissions Counselor and
Marketing Coordinator
Manages University College Cork*



Sandy Akemi
Office Manager

Contact us at:
admissions@atlanticbridge.com
949-723-6318





admissions@atlanticbridge.com | 949-723-6318

